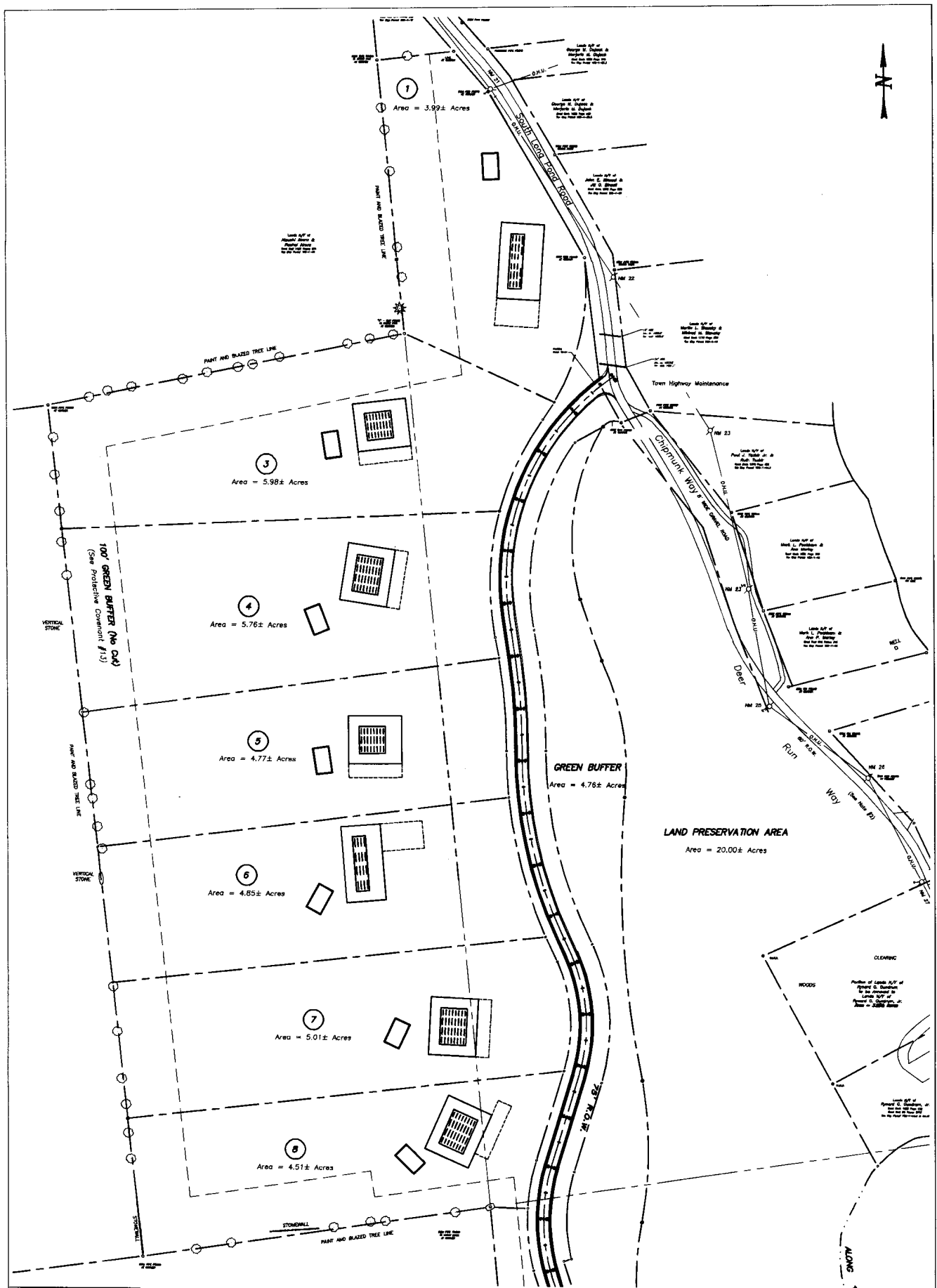


Exhibit "A"



Exhibit "B"



**The Lots at Sylvan Way**  
**Lands of Starbuck Land, LLC**  
 South Long Pond Road T. Croton  
 Rensselaer County, New York

**Layout Plan Lots 1-8**  
**20 Scale**  
 PREPARED FOR: Starbuck Land, LLC  
 41 Park Street, 8th Fl.  
 Adams, MA 02120  
 PREPARED BY: HAROLD DENNER, P.E.  
 P.O. BOX 213  
 CLIFTON PARK, NY 12065

APPROVAL: \_\_\_\_\_

APPROVAL: \_\_\_\_\_

Scale 1" = 30'

January 12, 2008

Exhibit "C"



Exhibit "D"

# Rensselaer County Department of Health

## Memorandum

To: Town of Grafton Planning Board  
Town of Grafton Highway Superintendent

From: Fred Howard

Date: January 23, 2009

Re: Sylvan Way Subdivision  
Health Department Concept Approval

Via Fax (518) 279-3685

---

As you are aware, there has been extensive collaborative effort on the part of: several Town officials (Planning Board members, Building Inspector, Highway Superintendent, Planning Board Attorney, and Town Engineer); the Developer and his professional team; and the County Health Department. As one of the outcomes of this collaboration, the Developer's revised plan eliminates the "flagstaff" lots along the pond frontage. This decreases development density in this sensitive area, which was a Health Department concern. With this modification, the site becomes approvable from an on site sewage disposal standpoint.

There have been a number of other modifications that address Town concerns. Others will present the details of these modifications to you.

Sewage disposal plans for this development will be approved once the Planning Board approves the Subdivision, revised septic plans have been completed, and any required site modification constructed.

CC via e-mail